

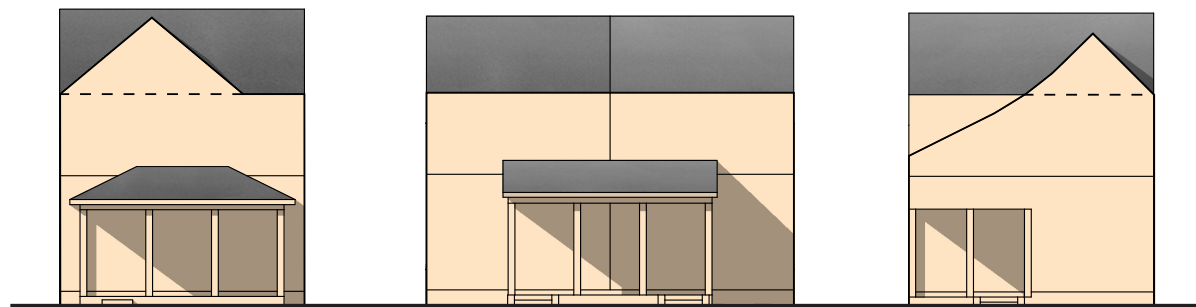
December 2023



BUILDING HEIGHT EXHIBIT

CAPITOL PARK COTTAGES

Salt Lake City, Utah

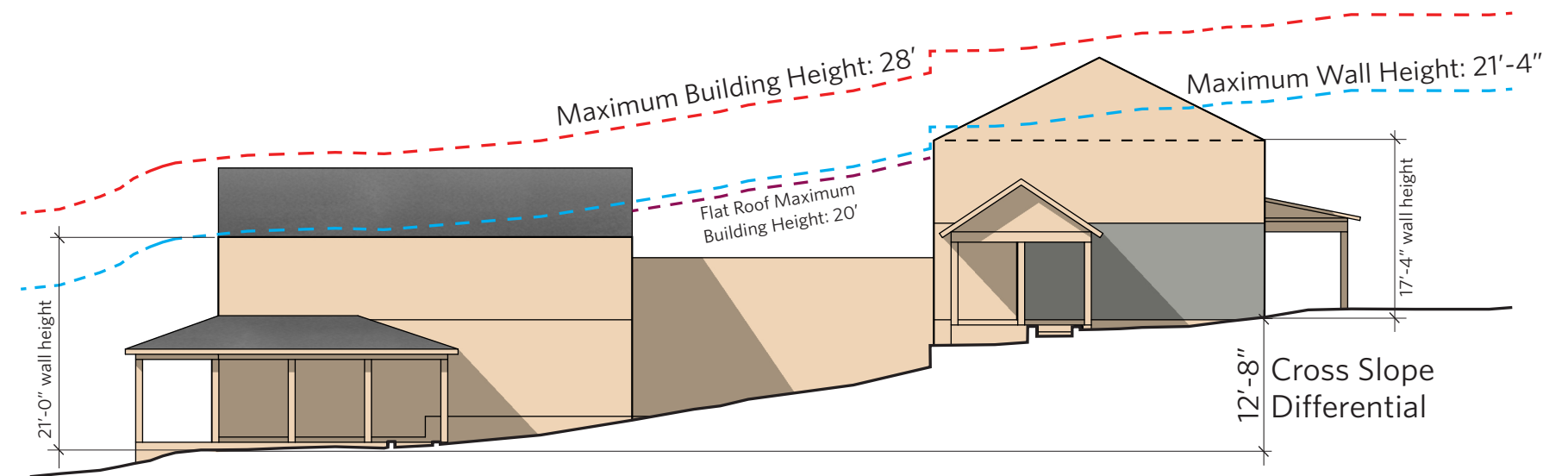


SIDE ELEVATION

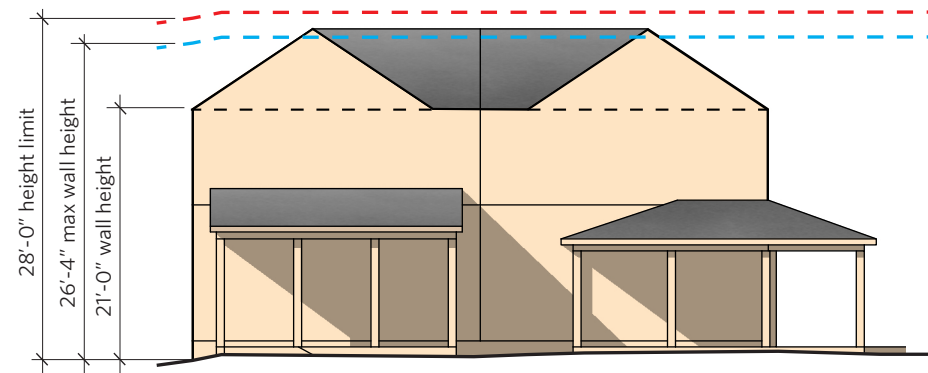
Base max wall height	20'
Reduction due to setback*	5'
Increase due to grade**	6'-4"
Updated max wall height	21'-4"

* Wall height reduction of 1'-0" for every 1'-0" reduction in the side yard setback. See 21A.24.080: SR-1 AND SR-1A SPECIAL DEVELOPMENT PATTERN RESIDENTIAL DISTRICT: D3c.

** Wall height increase of 0.5' for every 1'-0" Cross Slope Differential. See 21A.24.080: SR-1 AND SR-1A SPECIAL DEVELOPMENT PATTERN RESIDENTIAL DISTRICT: D3c(1).

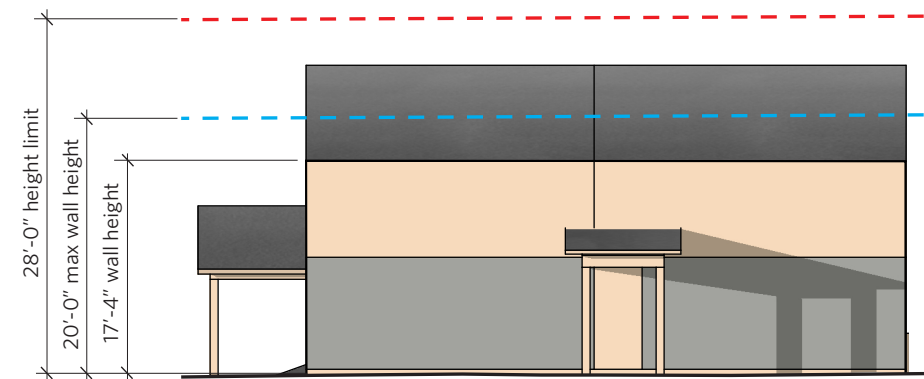


DOWNHILL ELEVATION



Base max wall height	20'
Increase due to grade	6'-4"
Updated max wall height	26'-4"

UPHILL ELEVATION

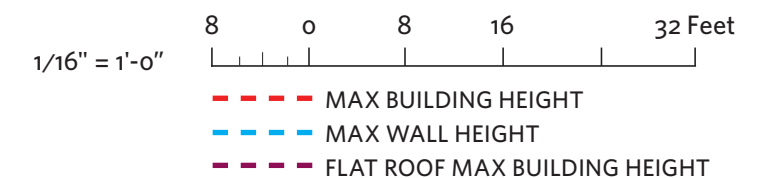


Base max wall height	20'
Increase due to grade	N/A on uphill elevation
Updated max wall height	20'

KEY PLAN (NTS)



LOTS 1 & 2 - BUILDING HEIGHT EXHIBIT

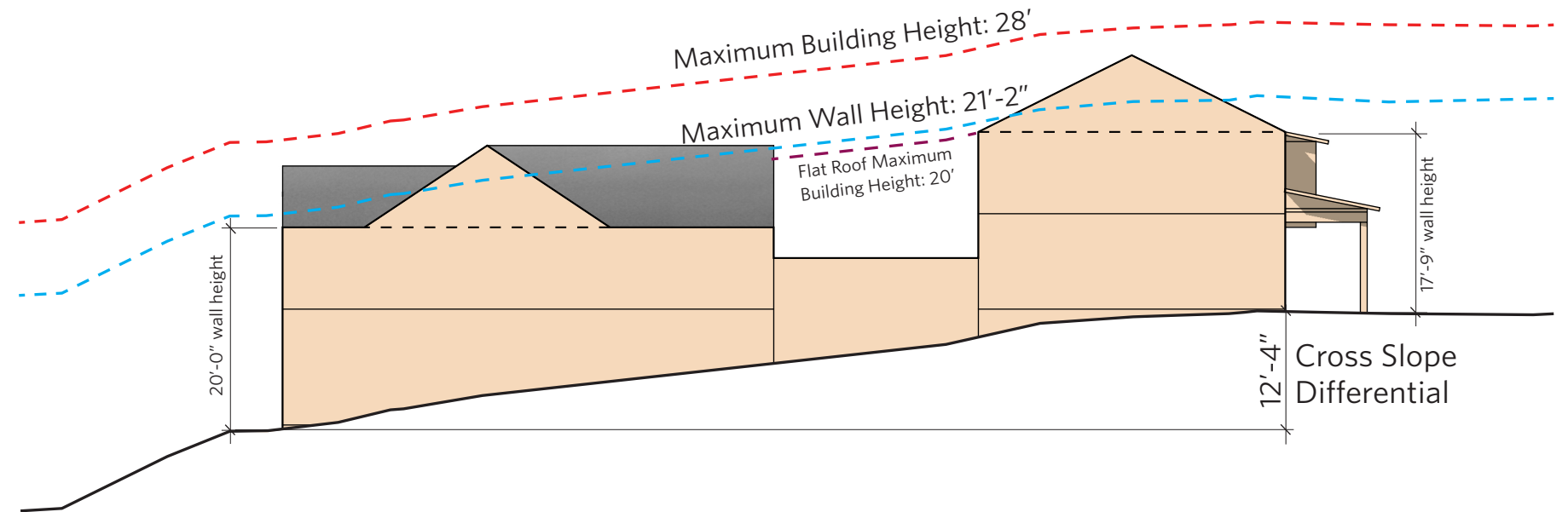


SIDE ELEVATION

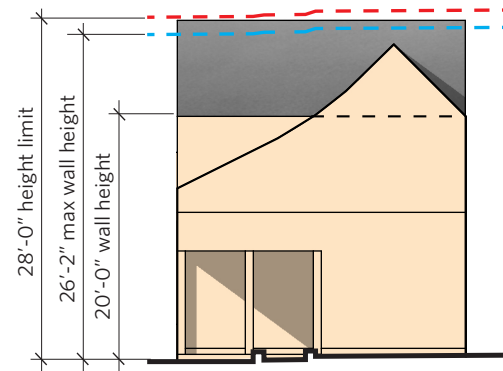
Base max wall height	20'
Reduction due to setback*	5'
Increase due to grade**	6'-2"
Updated max wall height	21'-2"

* Wall height reduction of 1'-0" for every 1'-0" reduction in the side yard setback. See 21A.24.080: SR-1 AND SR-1A SPECIAL DEVELOPMENT PATTERN RESIDENTIAL DISTRICT: D3c.

** Wall height increase of 0.5' for every 1'-0" Cross Slope Differential. See 21A.24.080: SR-1 AND SR-1A SPECIAL DEVELOPMENT PATTERN RESIDENTIAL DISTRICT: D3c(1).

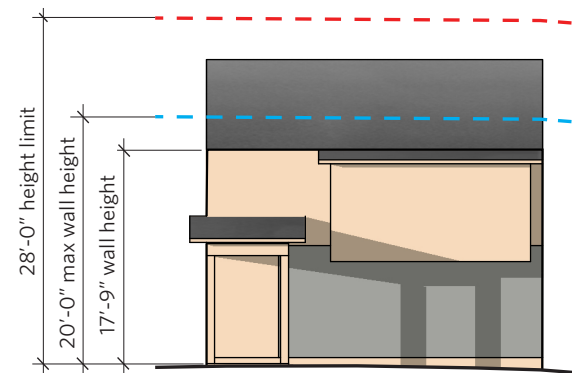


DOWNHILL ELEVATION



Base max wall height	20'
Increase due to grade	6'-2"
Updated max wall height	26'-2"

UPHILL ELEVATION

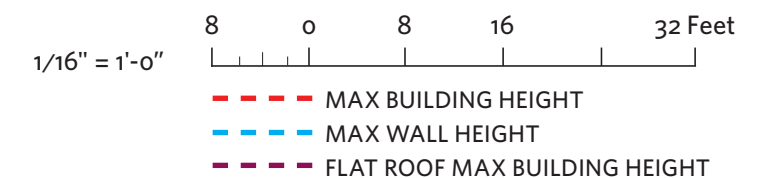


Base max wall height	20'
Increase due to grade	N/A on uphill elevation
Updated max wall height	20'

KEY PLAN (NTS)



LOT 3 - BUILDING HEIGHT EXHIBIT

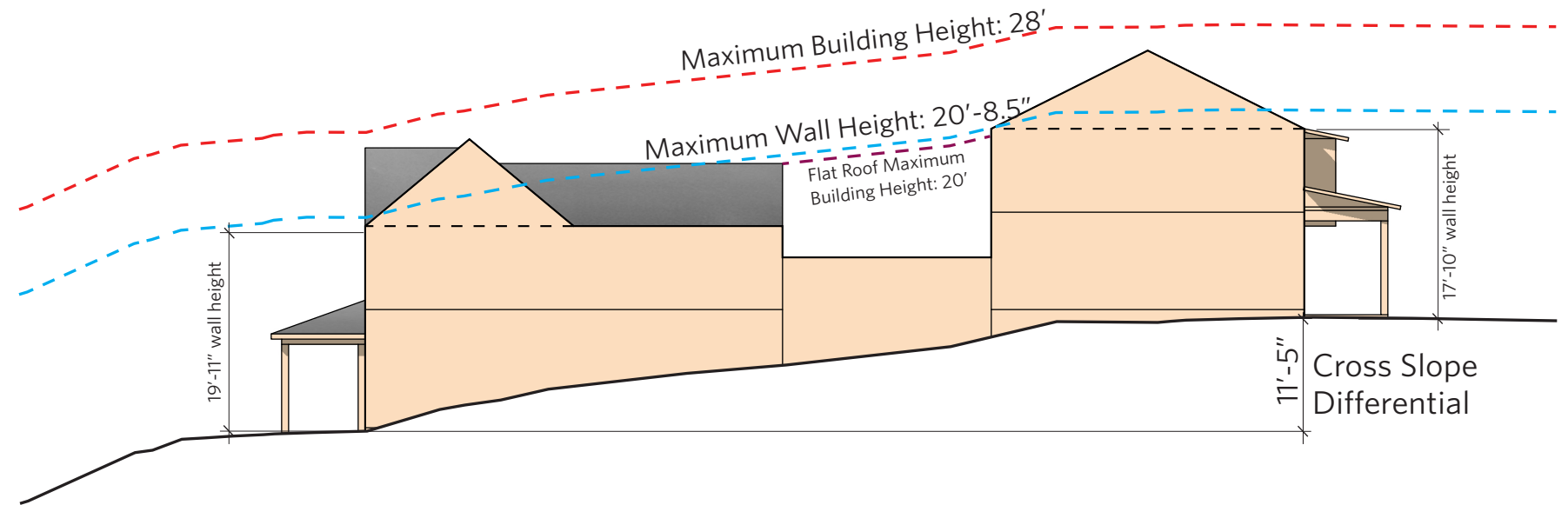


SIDE ELEVATION

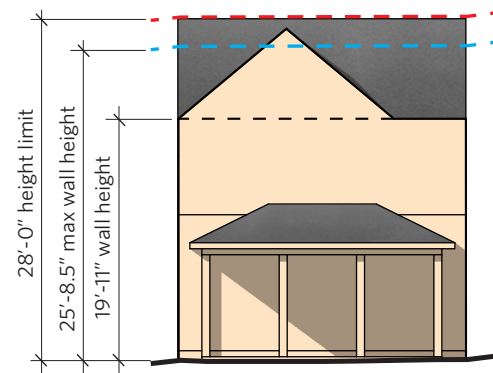
Base max wall height	20'
Reduction due to setback*	5'
Increase due to grade**	5'-8.5"
Updated max wall height	20'-8.5"

* Wall height reduction of 1'-0" for every 1'-0" reduction in the side yard setback. See 21A.24.080: SR-1 AND SR-1A SPECIAL DEVELOPMENT PATTERN RESIDENTIAL DISTRICT: D3c.

** Wall height increase of 0.5' for every 1'-0" Cross Slope Differential. See 21A.24.080: SR-1 AND SR-1A SPECIAL DEVELOPMENT PATTERN RESIDENTIAL DISTRICT: D3c(1).

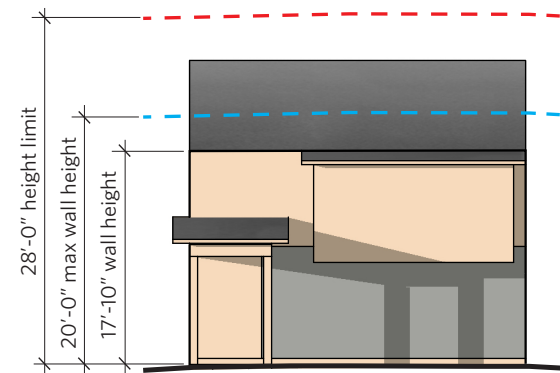


DOWNHILL ELEVATION



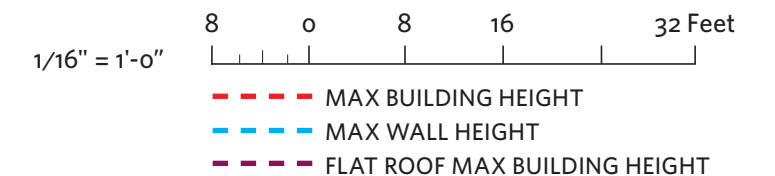
Base max wall height	20'
Increase due to grade	5'-8.5"
Updated max wall height	25'-8.5"

UPHILL ELEVATION



Base max wall height	20'
Increase due to grade	N/A on uphill elevation
Updated max wall height	20'

KEY PLAN (NTS)



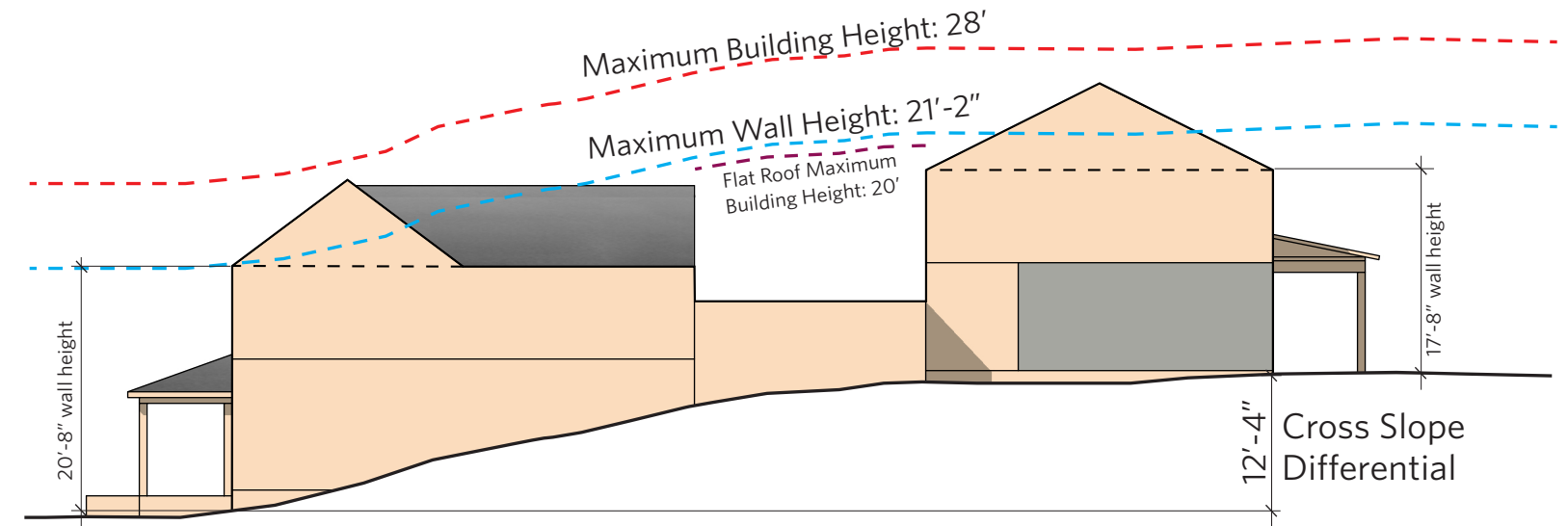
LOT 4 - BUILDING HEIGHT EXHIBIT

SIDE ELEVATION

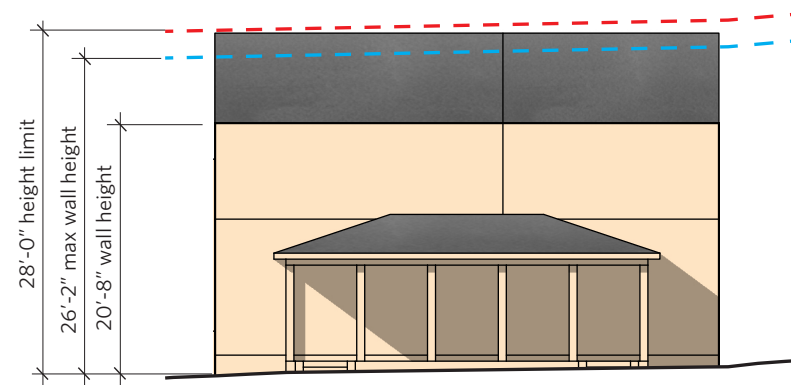
Base max wall height	20'
Reduction due to setback*	5'
Increase due to grade**	6'-2"
Updated max wall height	21'-2"

* Wall height reduction of 1'-0" For every 1'-0" reduction in the side yard setback. See 21A.24.080: SR-1 AND SR-1A SPECIAL DEVELOPMENT PATTERN RESIDENTIAL DISTRICT: D3c.

** Wall height increase of 0.5' for every 1'-0" Cross Slope Differential. See 21A.24.080: SR-1 AND SR-1A SPECIAL DEVELOPMENT PATTERN RESIDENTIAL DISTRICT: D3c(1).

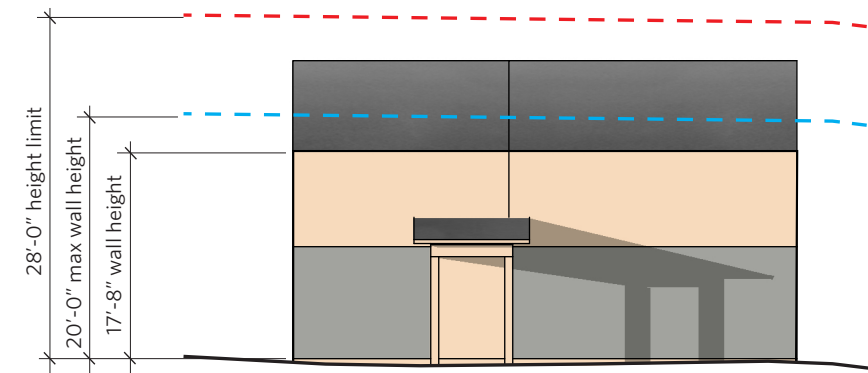


DOWNHILL ELEVATION



Base max wall height	20'
Increase due to grade	6'-2"
Updated max wall height	26'-2"

UPHILL ELEVATION

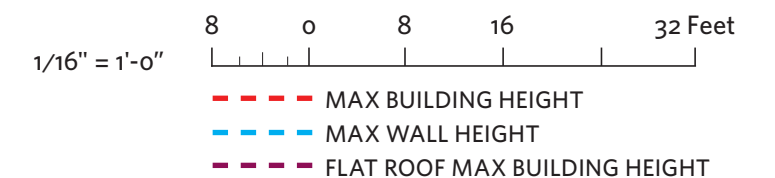


Base max wall height	20'
Increase due to grade	N/A on uphill elevation
Updated max wall height	20'

KEY PLAN (NTS)



LOTS 5 & 6 - BUILDING HEIGHT EXHIBIT

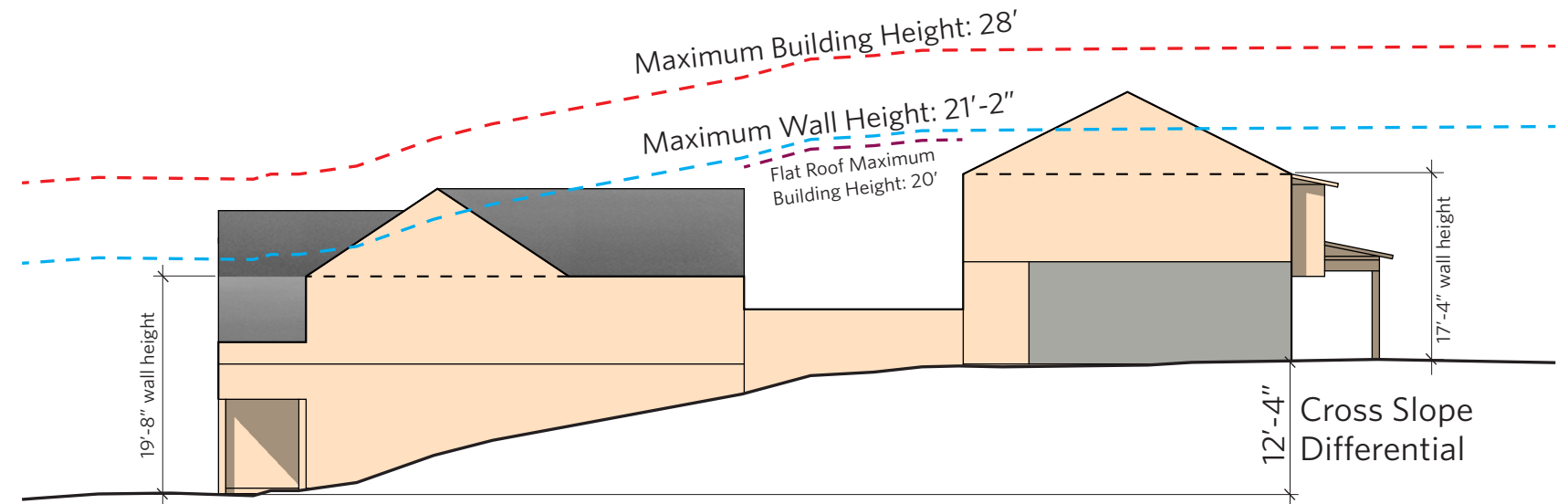


SIDE ELEVATION

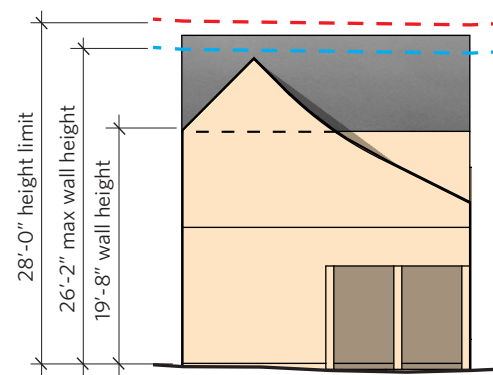
Base max wall height	20'
Reduction due to setback*	5'
Increase due to grade**	6'-2"
Updated max wall height	21'-2"

* Wall height reduction of 1'-0" for every 1'-0" reduction in the side yard setback. See 21A.24.080: SR-1 AND SR-1A SPECIAL DEVELOPMENT PATTERN RESIDENTIAL DISTRICT: D3c.

** Wall height increase of 0.5' for every 1'-0" Cross Slope Differential. See 21A.24.080: SR-1 AND SR-1A SPECIAL DEVELOPMENT PATTERN RESIDENTIAL DISTRICT: D3c(1).

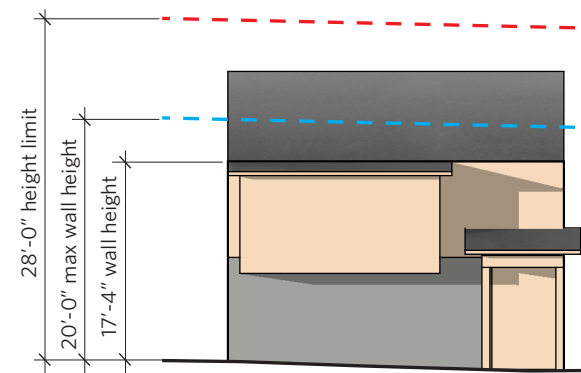


DOWNHILL ELEVATION



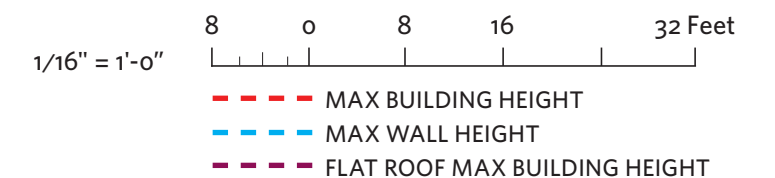
Base max wall height	20'
Increase due to grade	6'-2"
Updated max wall height	26'-2"

UPHILL ELEVATION



Base max wall height	20'
Increase due to grade	N/A on uphill elevation
Updated max wall height	20'

KEY PLAN (NTS)



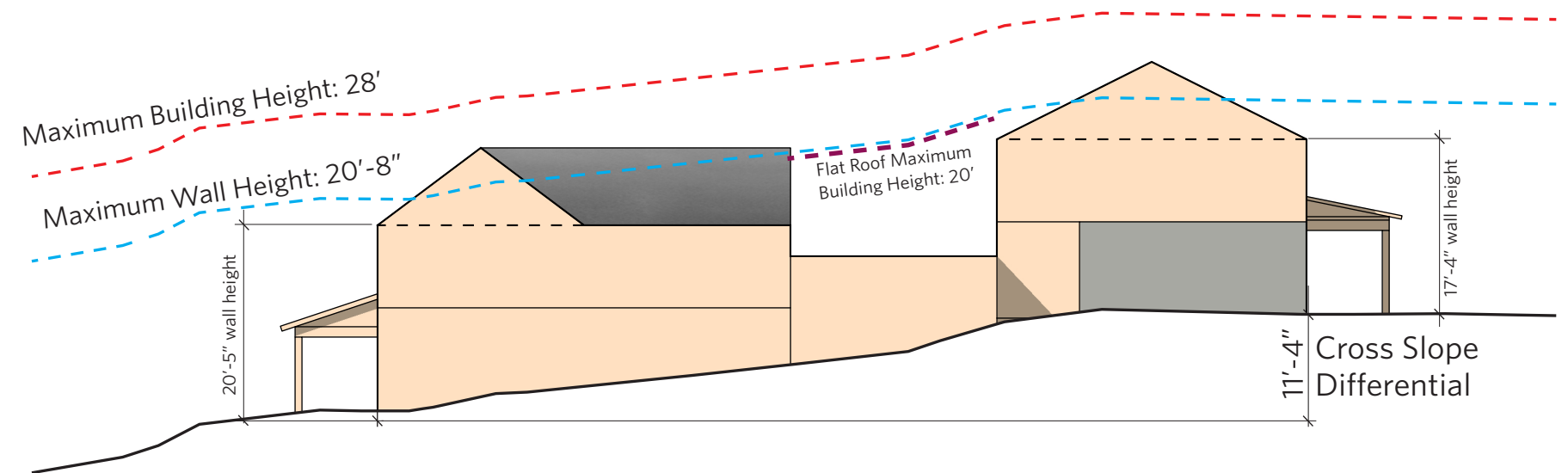
LOT 7 - BUILDING HEIGHT EXHIBIT

SIDE ELEVATION

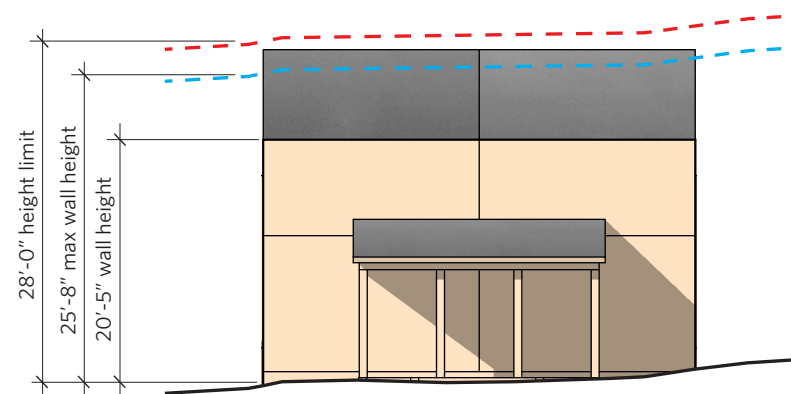
Base max wall height	20'
Reduction due to setback*	5'
Increase due to grade**	5'-8"
Updated max wall height	20'-8"

* Wall height reduction of 1'-0" For every 1'-0" reduction in the side yard setback. See 21A.24.080: SR-1 AND SR-1A SPECIAL DEVELOPMENT PATTERN RESIDENTIAL DISTRICT: D3c.

** Wall height increase of 0.5' for every 1'-0" Cross Slope Differential. See 21A.24.080: SR-1 AND SR-1A SPECIAL DEVELOPMENT PATTERN RESIDENTIAL DISTRICT: D3c(1).

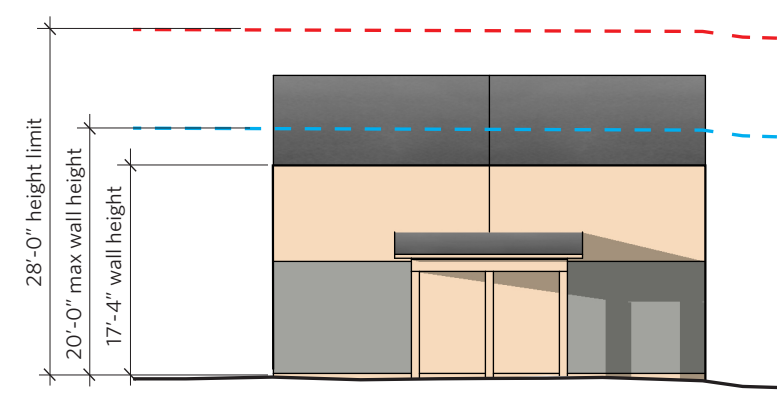


DOWNHILL ELEVATION



Base max wall height	20'
Increase due to grade	5'-8"
Updated max wall height	25'-8"

UPHILL ELEVATION

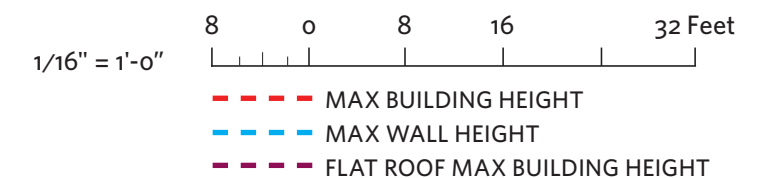


Base max wall height	20'
Increase due to grade	N/A on uphill elevation
Updated max wall height	20'

KEY PLAN (NTS)



LOTS 8 & 9 - BUILDING HEIGHT EXHIBIT

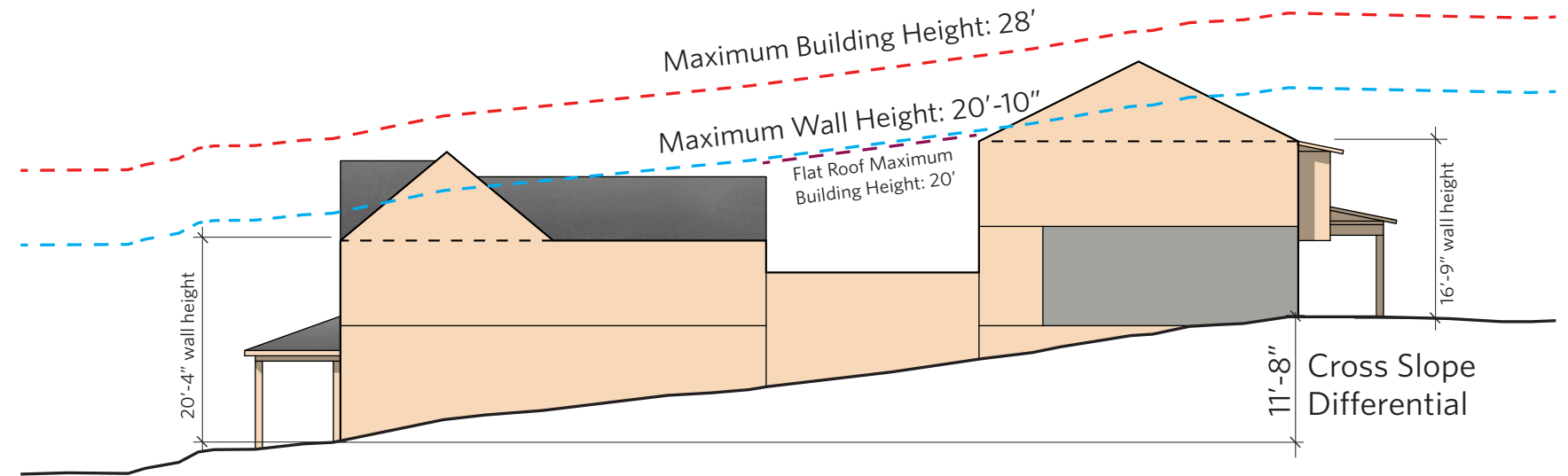


SIDE ELEVATION

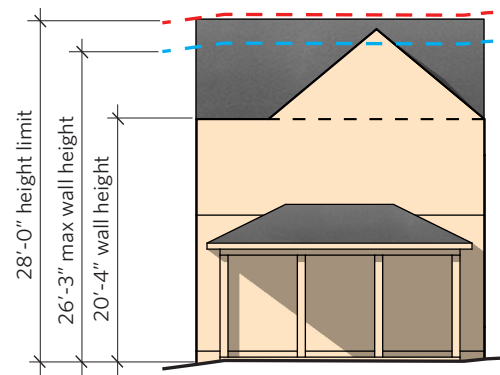
Base max wall height	20'
Reduction due to setback*	5'
Increase due to grade**	5'-10"
Updated max wall height	20'-10"

* Wall height reduction of 1'-0" for every 1'-0" reduction in the side yard setback. See 21A.24.080: SR-1 AND SR-1A SPECIAL DEVELOPMENT PATTERN RESIDENTIAL DISTRICT: D3c.

** Wall height increase of 0.5' for every 1'-0" Cross Slope Differential. See 21A.24.080: SR-1 AND SR-1A SPECIAL DEVELOPMENT PATTERN RESIDENTIAL DISTRICT: D3c(1).

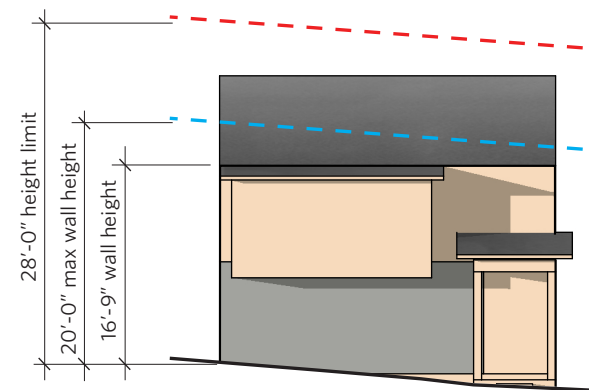


DOWNHILL ELEVATION



Base max wall height	20'
Increase due to grade	5'-10"
Updated max wall height	25'-10"

UPHILL ELEVATION

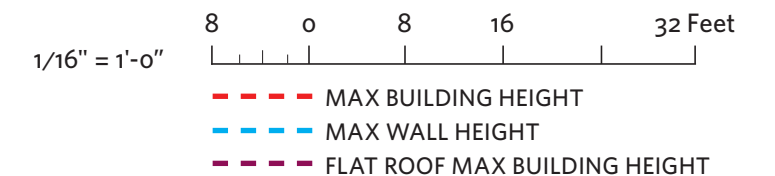


Base max wall height	20'
Increase due to grade	N/A on uphill elevation
Updated max wall height	20'

KEY PLAN (NTS)



LOT 10 - BUILDING HEIGHT EXHIBIT

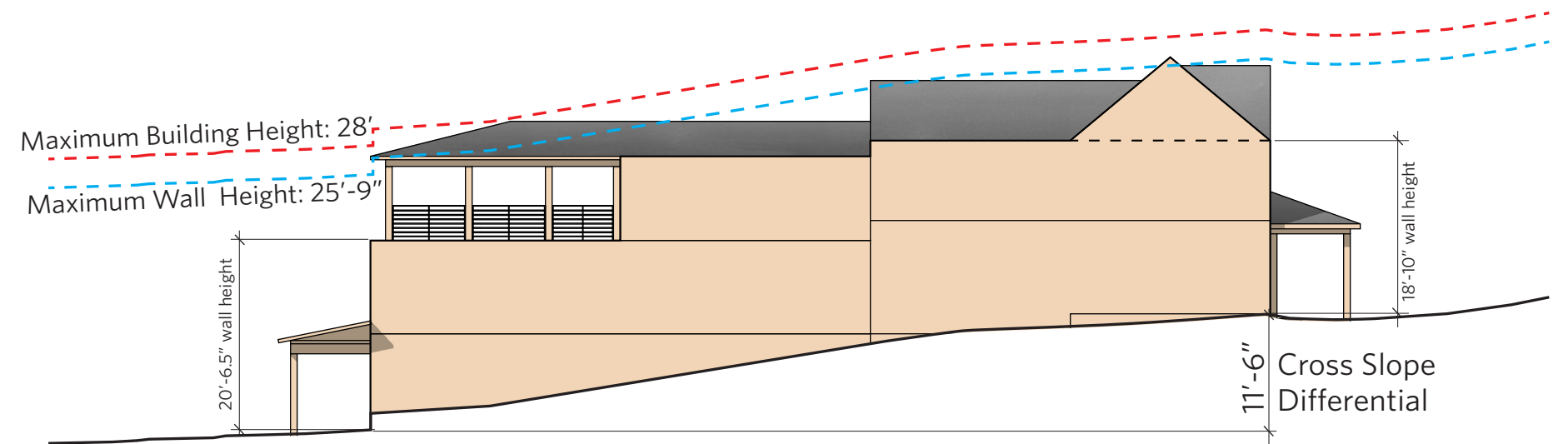


SIDE ELEVATION

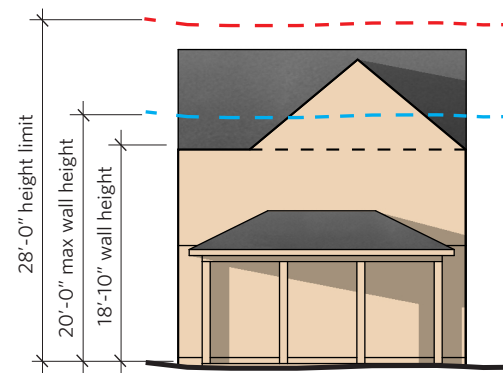
Base max wall height	20'
Reduction due to setback*	0'
Increase due to grade**	5'-9"
Updated max wall height	25'-9"

* Wall height reduction of 1'-0" for every 1'-0" reduction in the side yard setback. See 21A.24.080: SR-1 AND SR-1A SPECIAL DEVELOPMENT PATTERN RESIDENTIAL DISTRICT: D3c.

** Wall height increase of 0.5' for every 1'-0" Cross Slope Differential. See 21A.24.080: SR-1 AND SR-1A SPECIAL DEVELOPMENT PATTERN RESIDENTIAL DISTRICT: D3c(1).

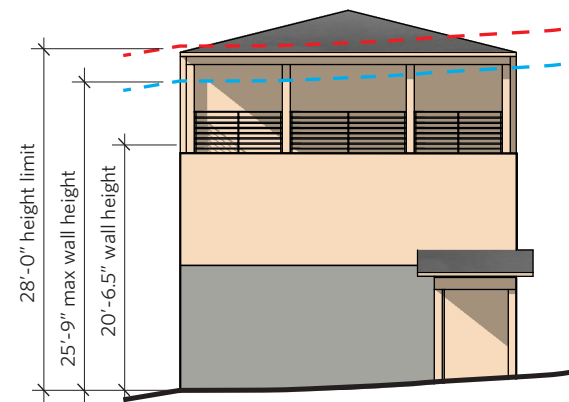


UPHILL ELEVATION



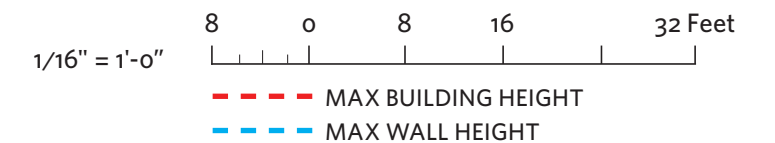
Base max wall height	20'
Increase due to grade	N/A on uphill elevation
Updated max wall height	20'

DOWNHILL ELEVATION



Base max wall height	20'
Increase due to grade	5'-9"
Updated max wall height	25'-9"

KEY PLAN (NTS)



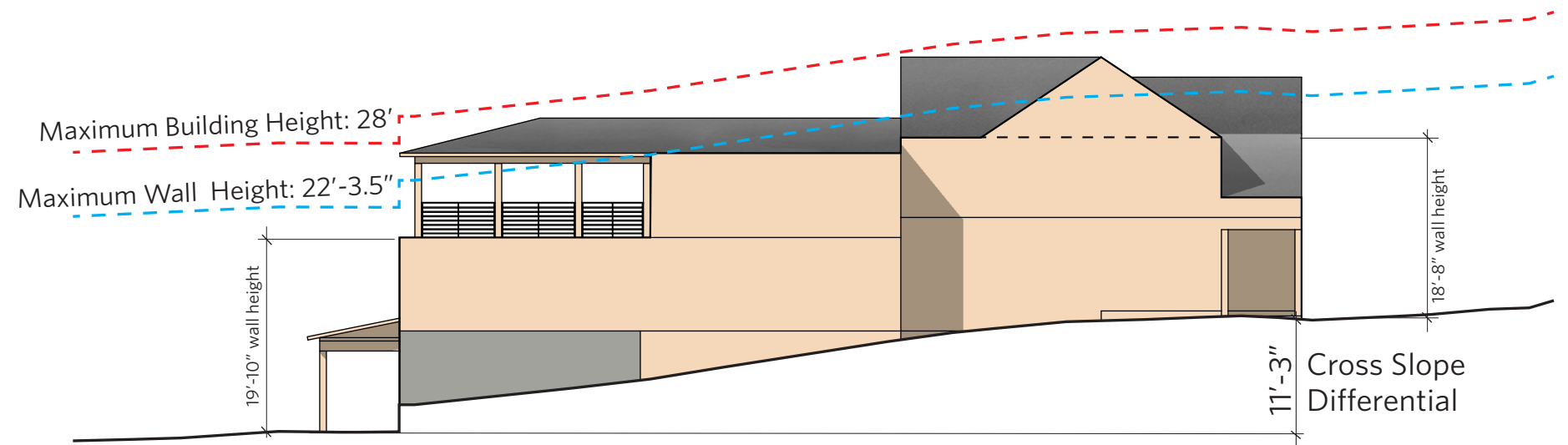
LOT 11 - BUILDING HEIGHT EXHIBIT

SIDE ELEVATION

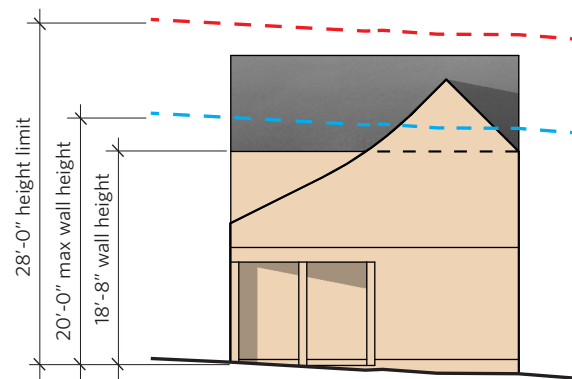
Base max wall height	20'
Reduction due to setback*	3'-4"
Increase due to grade**	5'-7.5"
Updated max wall height	22'-3.5"

* Wall height reduction of 1'-0" For every 1'-0" reduction in the side yard setback. See 21A.24.080: SR-1 AND SR-1A SPECIAL DEVELOPMENT PATTERN RESIDENTIAL DISTRICT: D3c.

** Wall height increase of 0.5' for every 1'-0" Cross Slope Differential. See 21A.24.080: SR-1 AND SR-1A SPECIAL DEVELOPMENT PATTERN RESIDENTIAL DISTRICT: D3c(1).

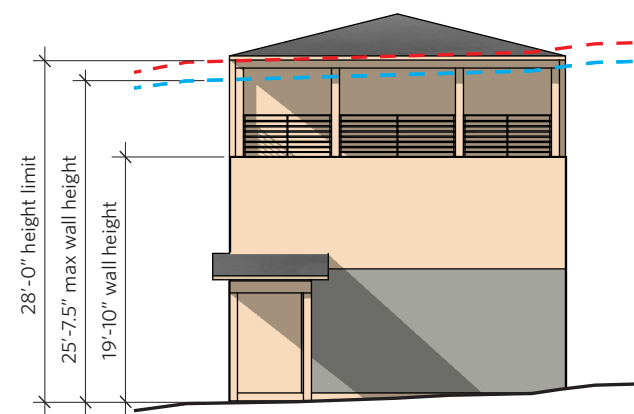


UPHILL ELEVATION



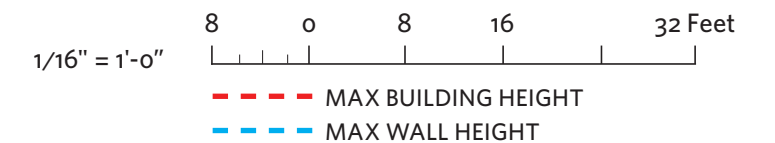
Base max wall height	20'
Increase due to grade	N/A on uphill elevation
Updated max wall height	20'

DOWNHILL ELEVATION



Base max wall height	20'
Increase due to grade	5'-7.5"
Updated max wall height	25'-7.5"

KEY PLAN (NTS)



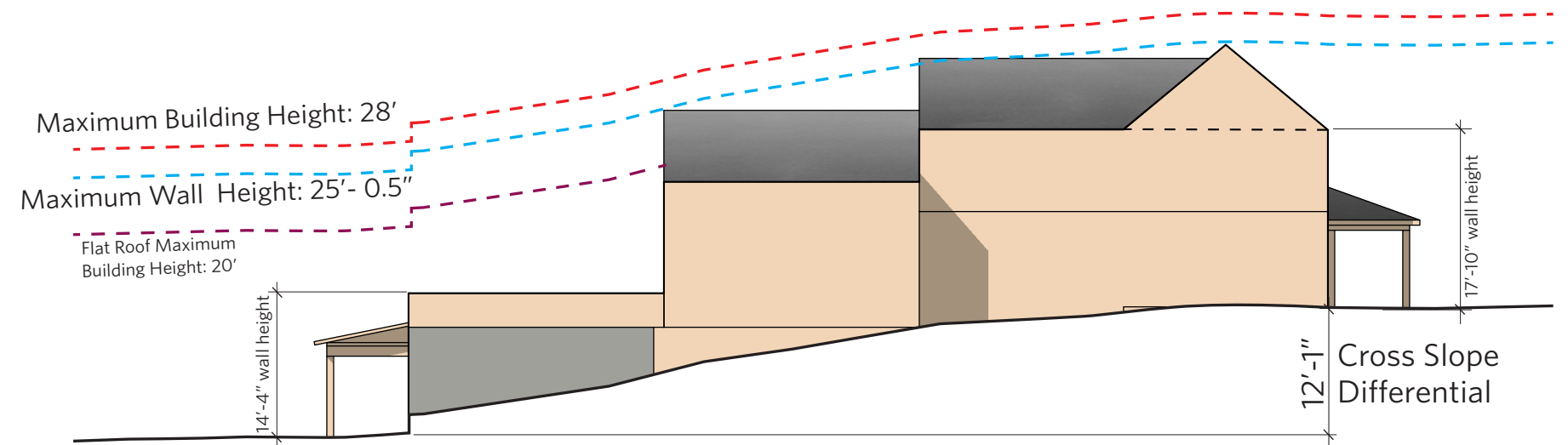
LOT 12 - BUILDING HEIGHT EXHIBIT

SIDE ELEVATION

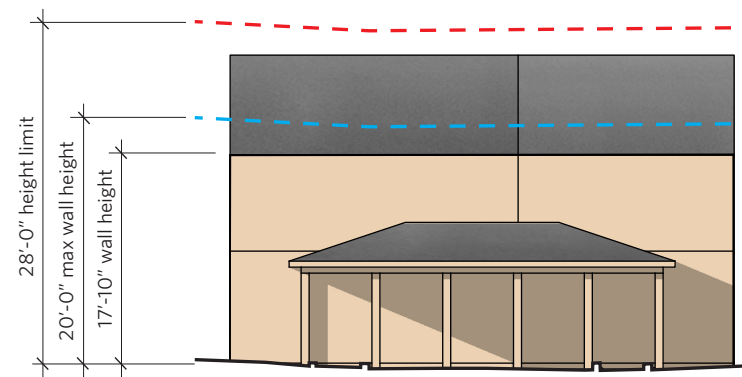
Base max wall height	20'
Reduction due to setback*	1'
Increase due to grade**	6'-0.5"
Updated max wall height	25'-0.5"

* Wall height reduction of 1'-0" For every 1'-0" reduction in the side yard setback. See 21A.24.080: SR-1 AND SR-1A SPECIAL DEVELOPMENT PATTERN RESIDENTIAL DISTRICT: D3c.

** Wall height increase of 0.5' for every 1'-0" Cross Slope Differential. See 21A.24.080: SR-1 AND SR-1A SPECIAL DEVELOPMENT PATTERN RESIDENTIAL DISTRICT: D3c(1).

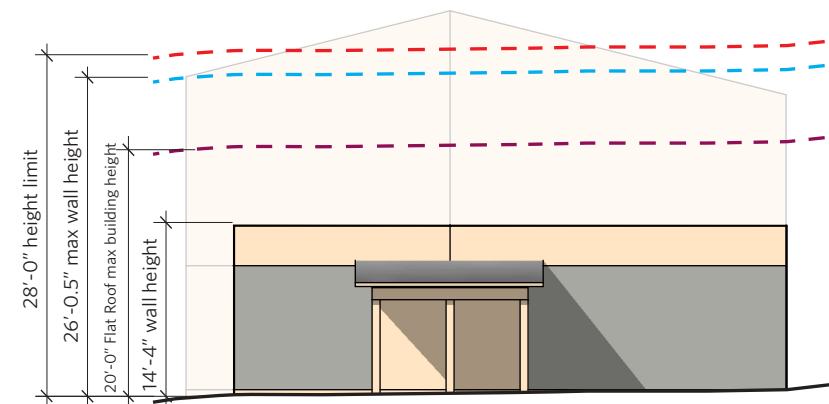


UPHILL ELEVATION



Base max wall height	20'
Increase due to grade	N/A on uphill elevation
Updated max wall height	20'

DOWNHILL ELEVATION

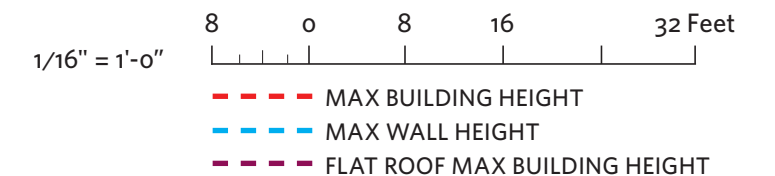


Base max wall height	20'
Increase due to grade	6'-0.5"
Updated max wall height	26'-0.5"

KEY PLAN (NTS)



LOTS 13 & 14 - BUILDING HEIGHT EXHIBIT

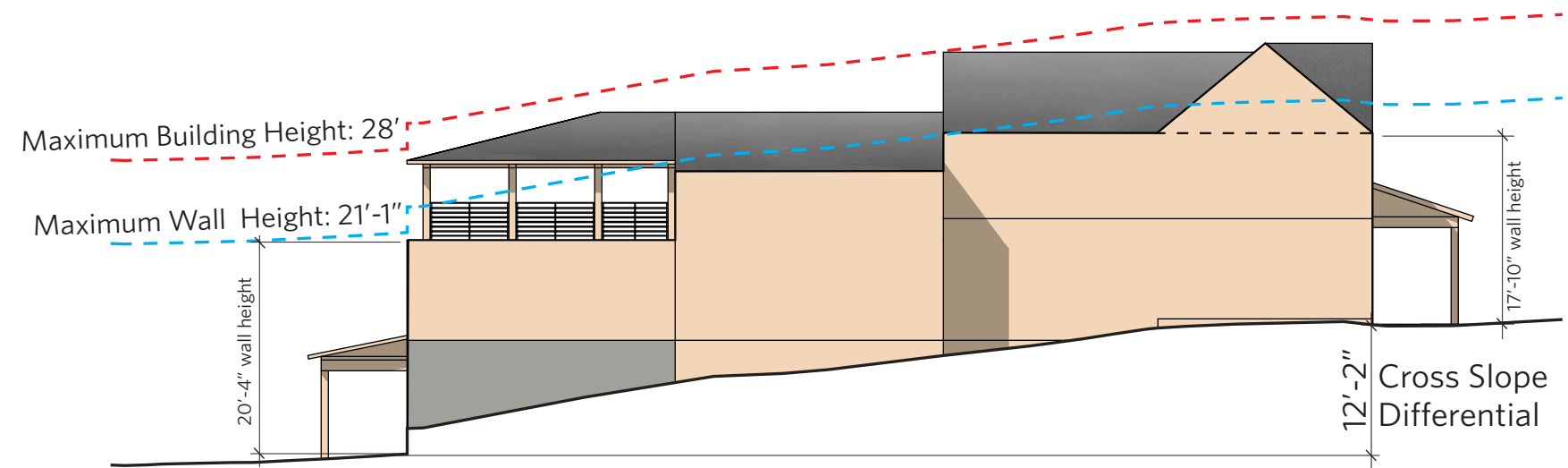


SIDE ELEVATION

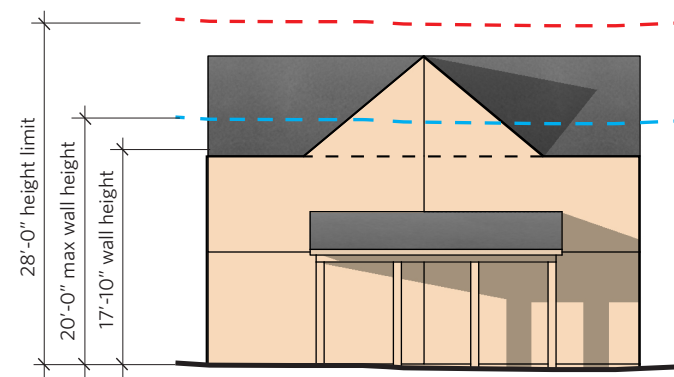
Base max wall height	20'
Reduction due to setback*	5'
Increase due to grade**	6'-1"
Updated max wall height	21'-1"

* Wall height reduction of 1'-0" for every 1'-0" reduction in the side yard setback. See 21A.24.080: SR-1 AND SR-1A SPECIAL DEVELOPMENT PATTERN RESIDENTIAL DISTRICT: D3c.

** Wall height increase of 0.5' for every 1'-0" Cross Slope Differential. See 21A.24.080: SR-1 AND SR-1A SPECIAL DEVELOPMENT PATTERN RESIDENTIAL DISTRICT: D3c(1).

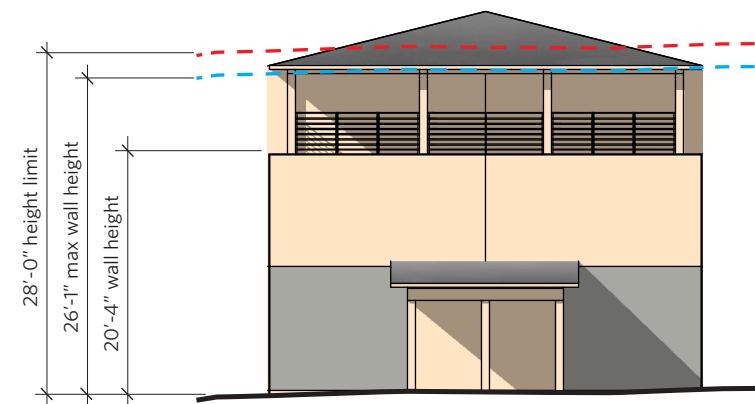


UPHILL ELEVATION



Base max wall height	20'
Increase due to grade	N/A on uphill elevation
Updated max wall height	20'

DOWNHILL ELEVATION

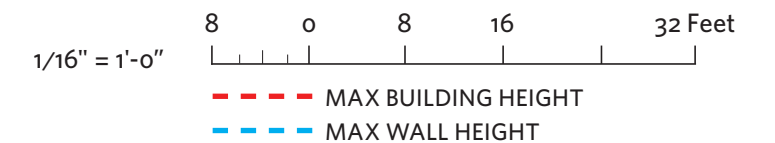


Base max wall height	20'
Increase due to grade	6'-1"
Updated max wall height	26'-1"

KEY PLAN (NTS)



LOTS 15 & 16 - BUILDING HEIGHT EXHIBIT

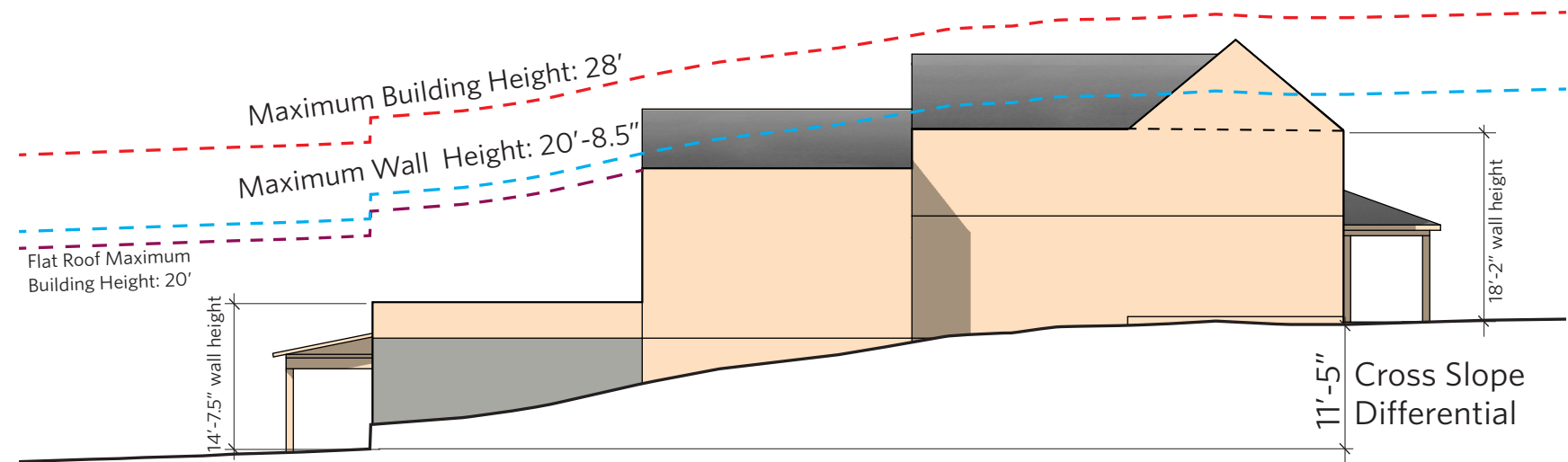


SIDE ELEVATION

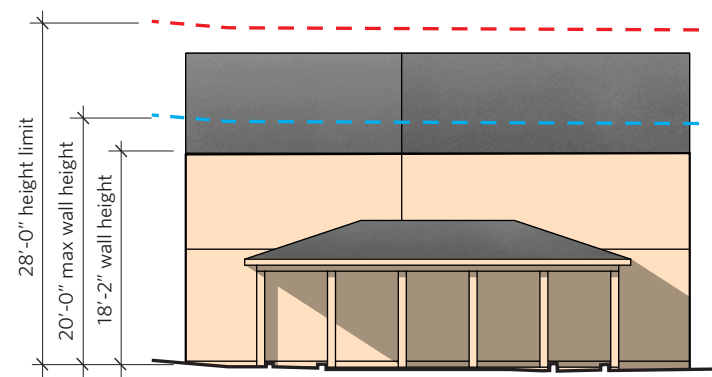
Base max wall height	20'
Reduction due to setback*	5'
Increase due to grade**	5'-8.5"
Updated max wall height	20'-8.5"

* Wall height reduction of 1'-0" for every 1'-0" reduction in the side yard setback. See 21A.24.080: SR-1 AND SR-1A SPECIAL DEVELOPMENT PATTERN RESIDENTIAL DISTRICT: D3c.

** Wall height increase of 0.5' for every 1'-0" Cross Slope Differential. See 21A.24.080: SR-1 AND SR-1A SPECIAL DEVELOPMENT PATTERN RESIDENTIAL DISTRICT: D3c(1).

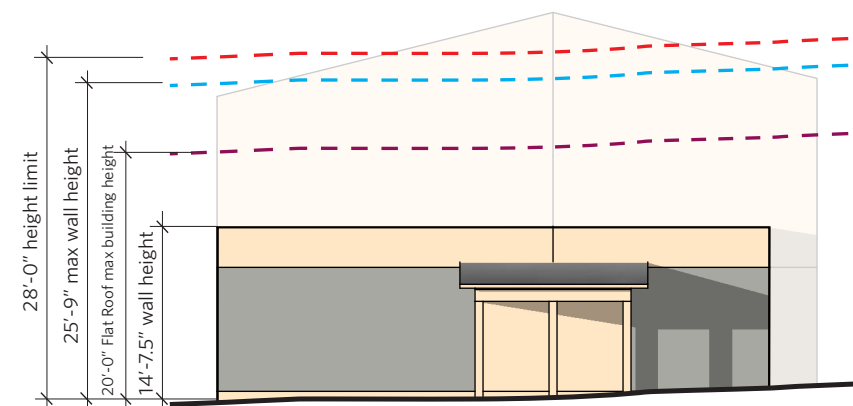


UPHILL ELEVATION



Base max wall height	20'
Increase due to grade	N/A on uphill elevation
Updated max wall height	20'

DOWNHILL ELEVATION

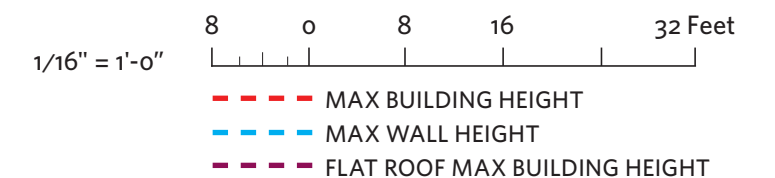


Base max wall height	20'
Increase due to grade	5'-8.5"
Updated max wall height	25'-8.5"

KEY PLAN (NTS)



LOTS 17 & 18 - BUILDING HEIGHT EXHIBIT

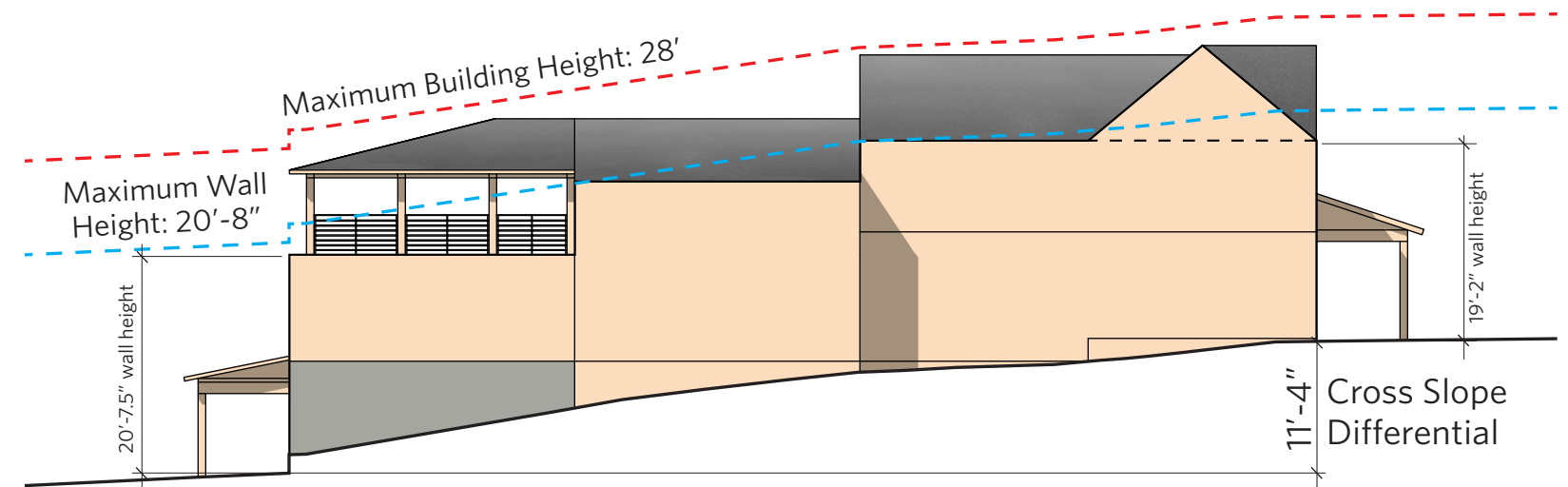


SIDE ELEVATION

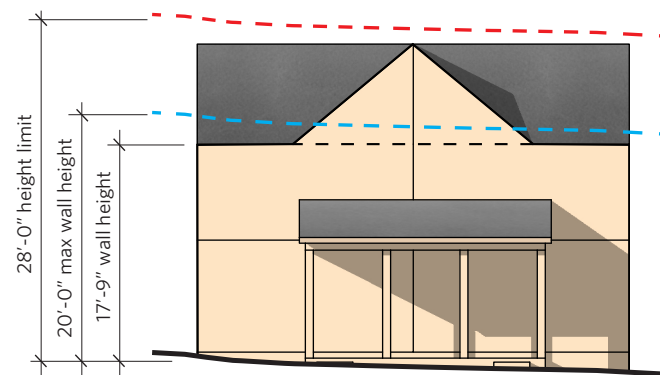
Base max wall height	20'
Reduction due to setback*	5'
Increase due to grade**	5'-8"
Updated max wall height	20'-8"

* Wall height reduction of 1'-0" for every 1'-0" reduction in the side yard setback. See 21A.24.080: SR-1 AND SR-1A SPECIAL DEVELOPMENT PATTERN RESIDENTIAL DISTRICT: D3c.

** Wall height increase of 0.5' for every 1'-0" Cross Slope Differential. See 21A.24.080: SR-1 AND SR-1A SPECIAL DEVELOPMENT PATTERN RESIDENTIAL DISTRICT: D3c(1).

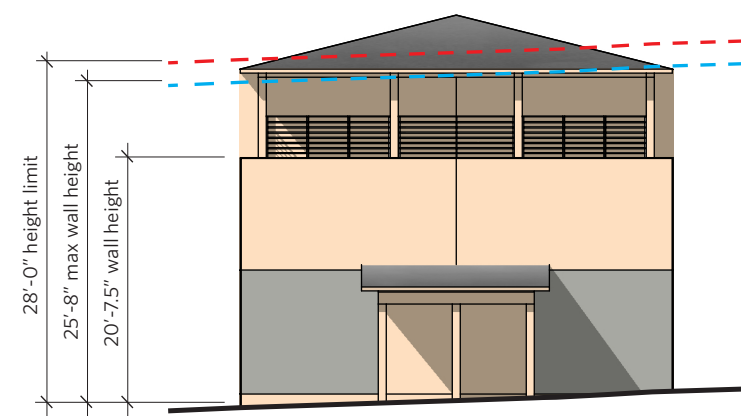


UPHILL ELEVATION



Base max wall height	20'
Increase due to grade	N/A on uphill elevation
Updated max wall height	20'

DOWNHILL ELEVATION

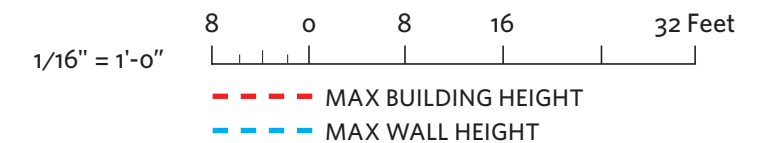


Base max wall height	20'
Increase due to grade	5'-8"
Updated max wall height	25'-8"

KEY PLAN (NTS)



LOTS 19 & 20 - BUILDING HEIGHT EXHIBIT

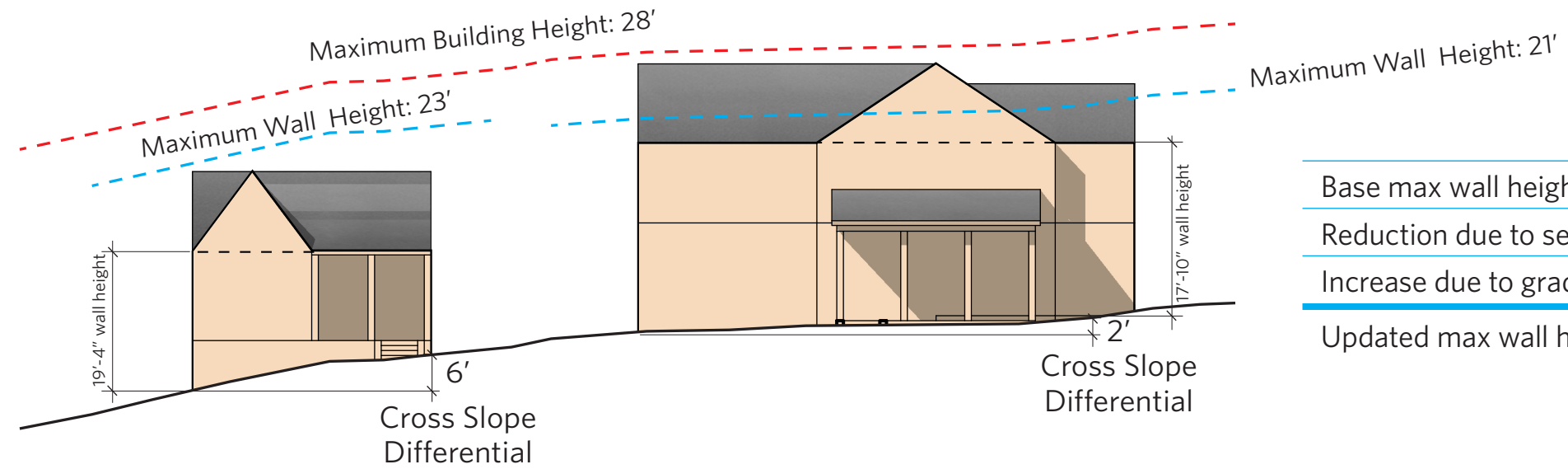


SIDE ELEVATION

Base max wall height	20'
Reduction due to setback*	0'
Increase due to grade**	3'
Updated max wall height	23'

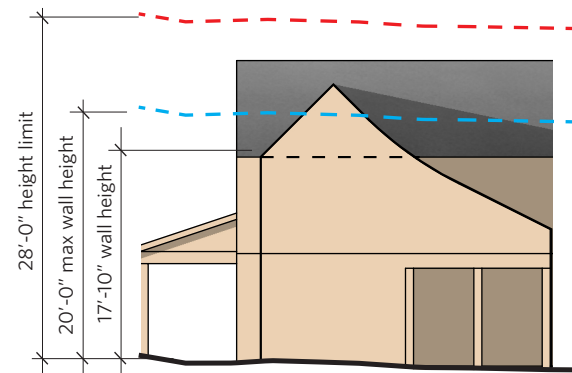
* Wall height reduction of 1'-0" for every 1'-0" reduction in the side yard setback. See 21A.24.080: SR-1 AND SR-1A SPECIAL DEVELOPMENT PATTERN RESIDENTIAL DISTRICT: D3c.

** Wall height increase of 0.5' for every 1'-0" Cross Slope Differential. See 21A.24.080: SR-1 AND SR-1A SPECIAL DEVELOPMENT PATTERN RESIDENTIAL DISTRICT: D3c(1).



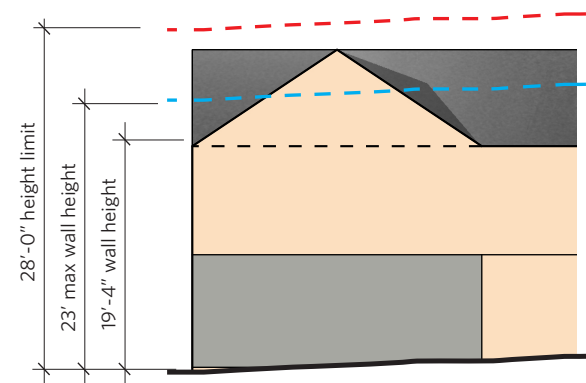
Base max wall height	20'
Reduction due to setback*	0'
Increase due to grade**	1'
Updated max wall height	21'

UPHILL ELEVATION



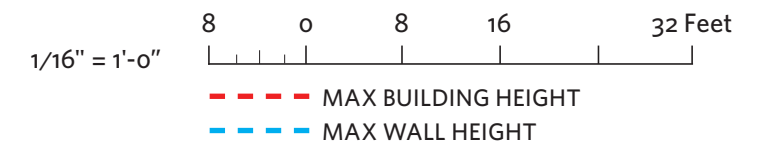
Base max wall height	20'
Increase due to grade	N/A on uphill elevation
Updated max wall height	20'

DOWNHILL ELEVATION



Base max wall height	20'
Increase due to grade	3'
Updated max wall height	23'

KEY PLAN (NTS)



LOT 21 - BUILDING HEIGHT EXHIBIT